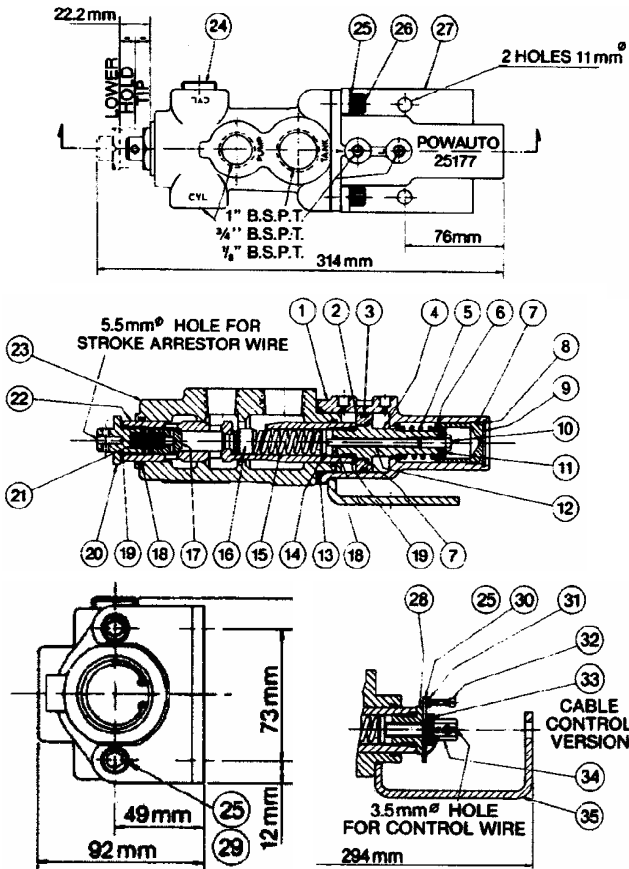


Barry Stoodley Pty Ltd

"83" SERIES VALVE SPARE PARTS



VALVE DESIGNATION CODES

83 series valve

VA 83 A 140 A 01

Identifier
VA = Valve

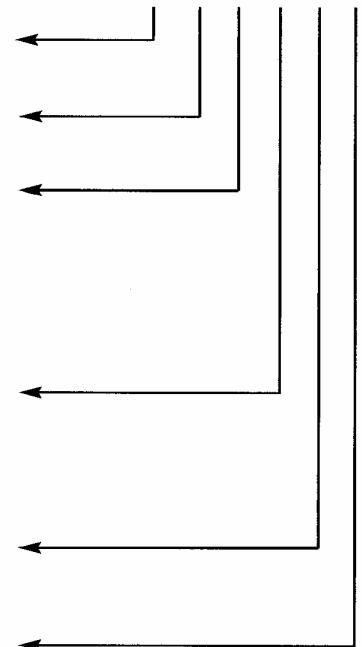
Valve series
83

Engagement Type
(Air only for dampened valve)
A = Air
B = Lever
C = Cable
D = Direct Knob
F = Electric / Air 24

Pressure setting (bar)
120 = 120 bar (1740 psi)
140 = 140 bar (2030 psi)
172 = 172 bar (2500 psi)
210 = 210 bar (3000 psi)

Dampening
A = No
B = Yes

Manufacturers Code
(internal use only, if required)

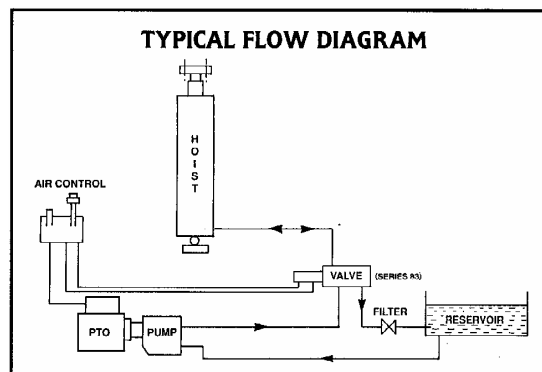


SERIES 83 VALVE SPECIFIC PARTS LIST				SERIES AIR83 VALVE SPECIFIC PARTS LIST			
ITEM	PART NO.	QTY	DESCRIPTION	ITEM	PART NO.	QTY	DESCRIPTION
28	41314	1	NUT	1	25177	1	Housing
29	48942E	2	Screw	2	43030	1	Piston
30	28075	1	Washer	3	45001EB	1	O-ring
31	41990C	1	Nut	4	59074	1	Piston
32	48351E	1	Screw	5	35094	1	Spring
33	28999C	4	Washer	6	28247	2	Washer
34	30010A	1	Stud	7	45001EH	2	O-ring
35	50185A	1	Mounting Bracket	8	39998S	1	Circlip
				9	33125	1	End Stop
				10	48941E	1	Screw
				11	28999V	3	Washer
				12	59073	1	Push Rod
				13	45001EC	1	O-ring
				26	48882G	2	Screw
				27	50185B	1	Mounting Bracket

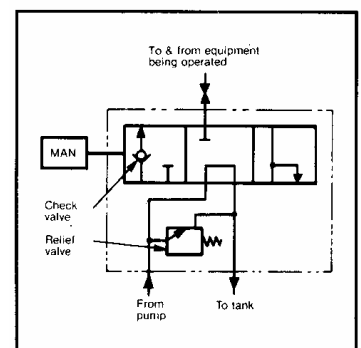
Technical Data

Flow:	The pressure differential in the raise position is 780 kPa (113 psi) at 150 l/min (40 USgpm) flow rate. The pressure differential in the lower or dump position is 480 kPa (70 psi) at 225 l/min (60 USgpm) flow rate.
Maximum Pressure:	The maximum working pressure is 210 bar (3000 psi). The relief valve setting is adjustable down to 70 bar (1000 psi).
Port Sizes:	Pump Port - 1 1/16" - 12 UN'0' Ring Cylinder Port - 1 1/16" - 12 UN'0' Ring Tank Port - 1 5/16" - 12 UN'0' Ring
Approximate Bare Mass:	Series VA83A - 5.1 kg (11.2 lb) Series VA83D - 4.2 kg (9.3 lb)

SERIES 83 VALVE COMMON PARTS LIST			
ITEM	PART NO.	QTY	DESCRIPTION
14	28055	1	Guide Spacer
15	35084*	1	Spring
16	37020	1	Relief Valve
17	37019	1	Check Valve
18	45001EF	2	O-ring
19	45001P	2	O-ring
20	41315A	1	Cap Nut
21	35002	1	Spring
22	37021	1	Spool
23	25034	1	Housing
24	41702F	1	Plug
25	M28997E	2	Spring Washer



Hydraulic Symbol



* For relief valve pressures greater than 20.7 MPa (3000 psi) use Spring Part No. 35156.